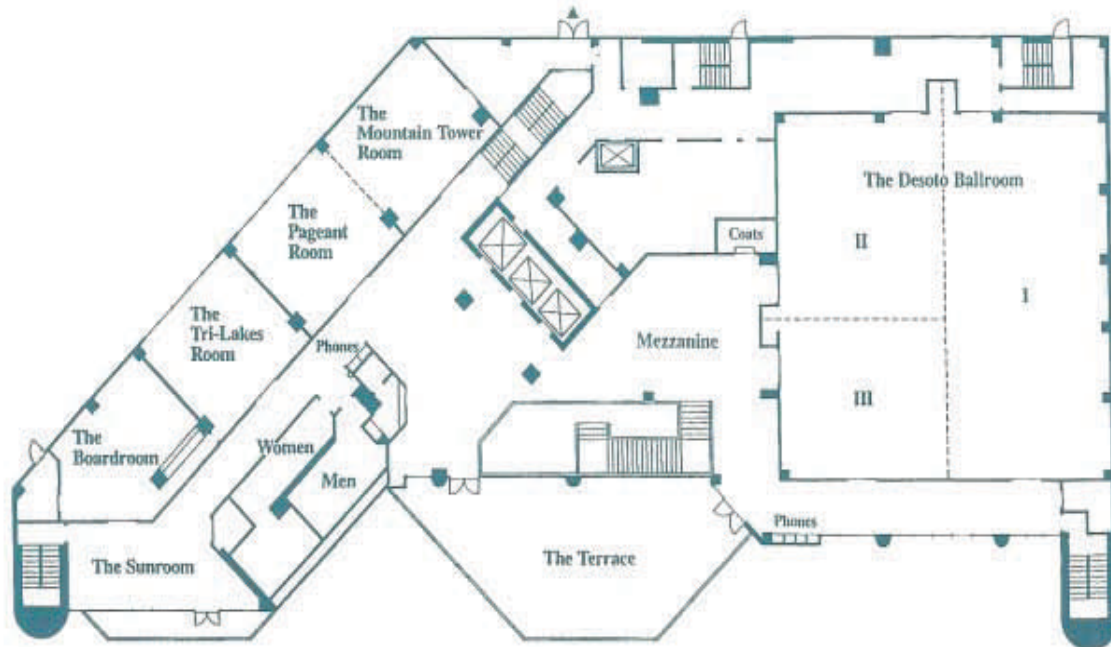


CONFERENCE FACILITIES

From the elegant spaciousness of the DeSoto Ballroom to the distinguished richness of the Boardroom to the open air of the outdoor Terrace, we will assist your planning needs to make your meeting, no matter what size, a pleasurable and productive experience. Larger groups will enjoy the convenience of the Hot Springs Convention center, connected to our second level by a short walkway.



MEETING ROOM SPECIFICATIONS

<u>Room</u>	<u>Square Footage</u>	<u>Size LxWxH</u>	<u>Reception</u>	<u>Banquet</u>	<u>Classroom</u>	<u>Theatre</u>
DeSoto Ballroom	4,480	67'x67'x12'	600	350	300	400
DeSoto 1	2,270	67'x34'x12'	320	150	156	255
DeSoto 2	1,250	37'x34'x12'	140	90	90	135
DeSoto 3	980	29'x34'x12'	100	50	48	96
Mountain Tower	620	26'x24'x10'	75	40	36	50
Pageant Room	620	26'x24'x10'	75	40	36	50
Tri-Lakes Room	620	26'x24'x10'	75	40	36	50
Boardroom	620	26'x24'x10'	—	20	—	—
Sunroom	420	28'x15'x10'	60	30	—	—
Terrace (Outdoors)	1,400	50'x28'	100	40	—	—
Mezzanine	—	—	300	—	—	—